



First Insurance Solutions Ltd

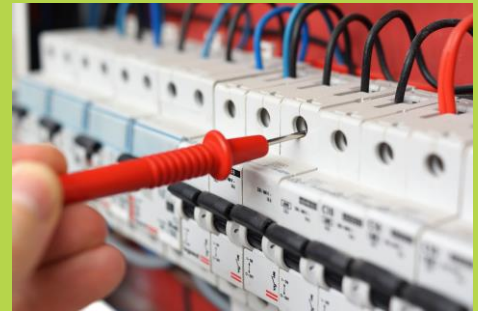
SPECIALIST INSURANCE ADVISORS

Specialist Insurance for Electrical Contractors

We can offer a same day* quotation.

Our policies can include the following extensions in cover:

- Efficacy - failure of fire or intruder alarm systems to trigger and perform as intended.
- Professional Wiring (Certification) cover - the issuing of wiring certificates (such as NICEIC) and PAT Testing stickers.
- Damage to Property Being Worked Upon.
- Financial Loss - for loss of business claims made against you by a client.
- Public/Products Liability – limit of up to £10,000,000 available if required.
- Data Cabling Work.
- Work at Height and Depths – including roof work.
- Work on Hazardous Locations such as hospitals.
- Defective Workmanship – cover against the product you have provided and installed being or alleging to be defective.



Covers which we can advise, quote and look to save you money on:

Motor Vehicles - Fleets 2+ and individual commercial vehicles

Employers' Liability

Public / Products Liability

Professional Indemnity

Contractors All Risks

Legal Expenses – including Contract Disputes and Debt Recovery

Commercial Property – including Buildings, Contents and Equipment

Who We Are

Specialist Insurance Brokers for Contractors

Small enough to care but big enough to negotiate highly competitive premiums

Dedicated Account Managers

Rapidly Expanding

*Same day equates to same business day and only where the market enables us to.



First Insurance Solutions Ltd is registered in England under reference 07102852. Authorised and regulated by the Financial Conduct Authority under reference 522668.

Call us on:

01634 868444

First Insurance Solutions Ltd, FIS House, Centre 3000, St Leonards Road, Maidstone, Kent ME16 0LS | www.firstins.co.uk



01634 868444



enquiries@firstins.co.uk



@FirstInsLtd



First Insurance Solutions Ltd



First Insurance Solutions Ltd

SPECIALIST INSURANCE ADVISORS

Motor Fleet Insurance

We offer a discount of 5% to our existing clients when they move additional classes of Insurance to us.

Our fleet policies can include:

- Fleets from only 2 vehicles
- Any Driver Policies
- UK and EU Usage
- Low Policy Excess(s)
- Courtesy Vehicles
- A Dedicated Claims Handler
- 24 Hour Claims Line
- Full Breakdown Cover

We have access to 20+ Motor Fleet insurers and individually insured vehicles can be transferred into one easy fleet policy.

Classes of Insurance we handle and advise on:

- Commercial Property (Buildings / Contents / Equipment)
- Employers' Liability
- Public / Products Liability
- Professional Indemnity
- Motor Fleet, Mini Fleet and Single Commercial Vehicles
- Legal Expenses/Directors and Officers
- Goods In Transit
- Contractors All Risks



Covers which we can advise, quote and look to save you money on:

Motor Vehicles - Fleets 2+ and individual commercial vehicles

Employers' Liability

Public / Products Liability

Professional Indemnity

Contractors All Risks

Legal Expenses – including Contract Disputes and Debt Recovery

Commercial Property – including Buildings, Contents and Equipment

Who We Are

Specialist Insurance Brokers for Contractors

Small enough to care but big enough to negotiate highly competitive premiums

Dedicated Account Managers

Rapidly Expanding

Call us on:

01634 868444



First Insurance Solutions Ltd is registered in England under reference 07102852. Authorised and regulated by the Financial Conduct Authority under reference 522668.

First Insurance Solutions Ltd, FIS House, Centre 3000, St Leonards Road, Maidstone, Kent ME16 0LS | www.firstins.co.uk



01634 868444



enquiries@firstins.co.uk



@FirstInsLtd



First Insurance Solutions Ltd